

RealWheels Corporation

WHEEL INSPECTION GUIDE

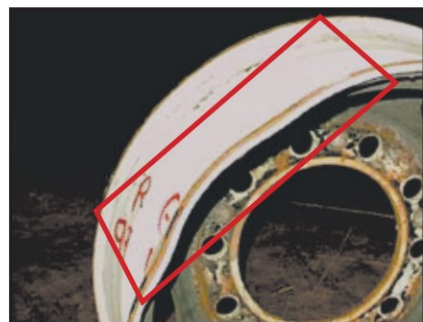
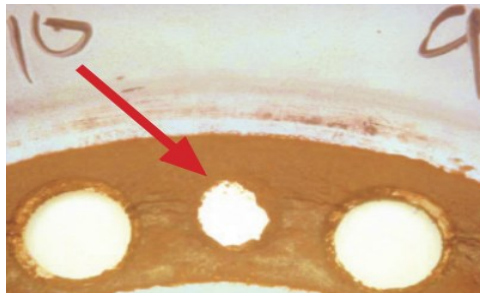
Wheel Inspections & Underinflated Tires:

It is recommended to frequently inspect the wheels you mount simulators to. Wheels can be damaged from curb impacts or other road hazards. Or a wheel may be damaged or dropped during maintenance. Look for damage around the rim where the bead seats. Look for damage or excessive wear around the lug nut. Look for signs of physical damage as well as for excessive corrosion.



Never reinflate any tire that has been operated in a run-flat or underinflated condition (i.e. 80% or less of recommended operating pressure).

Very important: have any damaged wheel serviced by a professional repair facility prior to adding air pressure. Additionally, if a tire is in an underinflated condition have the wheel and tire serviced by a professional repair facility and do not attempt to add air pressure.



Simulator Inspections:

After the Simulators have been installed, they should be inspected regularly, verifying they are tight and secured to the wheel. Every few weeks the simulators should be removed, thoroughly cleaned, and inspected front and back. At the same time, the wheels should be thoroughly inspected for any damage or wear. Note: if the wheels are damaged, do not reinstall the simulators until the damaged wheel is repaired or replaced. Inspect the mounting brackets, make sure all screws and nut connections are tight. Check brackets for excessive wear, hairline cracks, etc. If braided stainless steel air valves are installed, they should be inspected for fraying and excessive wear as well as secure connections with the rim air valves.



Care & Required Maintenance

Use of harsh chemicals and strong acid-based soaps should never be used. On a regular basis, we recommend the Simulators be washed front and back with mild automotive car or truck wash soap and water. For added protection and shine, it's recommended to periodically wax the polished front side of the simulators.

